



CAMPOS

COMMITTED
TO THE ORIGIN AND
SUSTAINABILITY

**Do you want to know exactly where in the world the fish
you have in your hands comes from?**

You can now know all the information
about the product and its origin with our

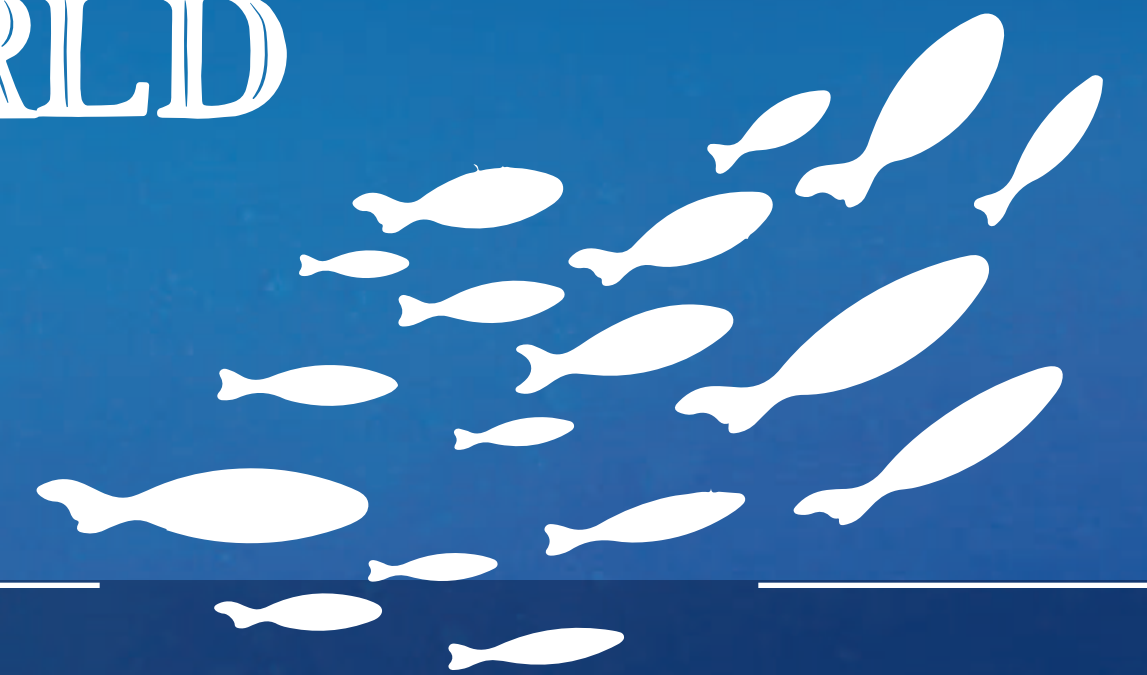
NEW TRACEABILITY

— TOOL —



Aware of the impact of our activity on the fishing resource,
on its habitat and on the communities that develop around it,
at **CAMPOS** we make our own commitments established in the

DECLARATION OF TRACEABILITY OF TUNA 2020 OF THE WORLD ECONOMIC FORUM



1 TUNA
TRACEABILITY
COMMITMENT

2 COMMITMENT TO
A SOCIALLY RESPONSIBLE TUNA
SUPPLY CHAIN

3 COMMITMENT TO
ENVIRONMENTALLY
RESPONSIBLE TUNA SOURCES

4 GOVERNMENT
COLLABORATION
COMMITMENT

In this context, we present the new traceability tool,
a clear example of our bet and commitment
as a company with the following values:

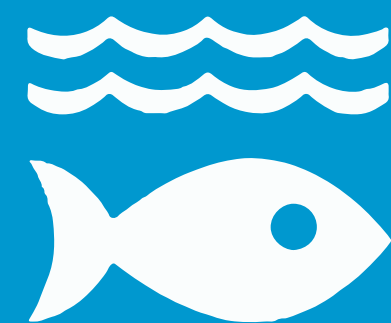
SOCIAL RESPONSABILITY

ENVIRONMENTAL COMMITMENT

SUSTAINABILITY



14 LIFE
BELOW WATER



12 RESPONSIBLE
CONSUMPTION
AND PRODUCTION



8 DECENT WORK
AND ECONOMIC
GROWTH



To use the traceability tool of **CAMPOS** , follow the next steps:

STEP 1

Enter the following link:



SALICA.ES / TRACEABILITY

STEP 2

Look for the code
that appears on
your packaging:



Cans



Cases



Jars



For example:

CI-022GLJ0

LP017B/0050

And write it
in the web search:

LP034B5/0183



STEP 3

Once you enter the code of your packaging, you will get all the information relative to the place from which the fish you have in your hands comes.

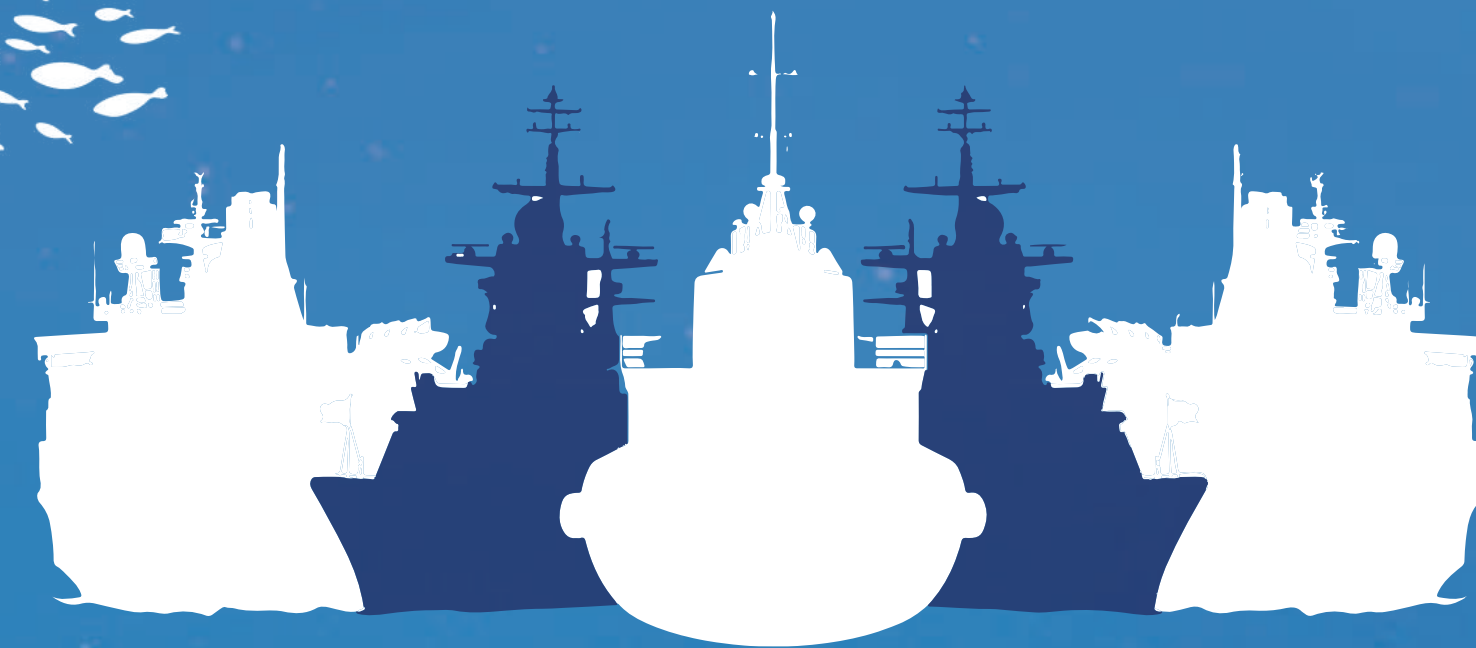
PASS THE SLIDE
!AND FIND OUT!

COMERCIAL
— DESIGNATION —



FISHING
— METHOD —

— TYPE OF —
BOAT



FISHING
— ZONE —



DATES OF
FIRST FREEZING
AND PROCESSING



FROZEN TUNA

START AND END DATE
OF THE CAMPAIGN



CANNED TUNA



CAMPOS

COMMITTED
TO THE ORIGIN AND
SUSTAINABILITY